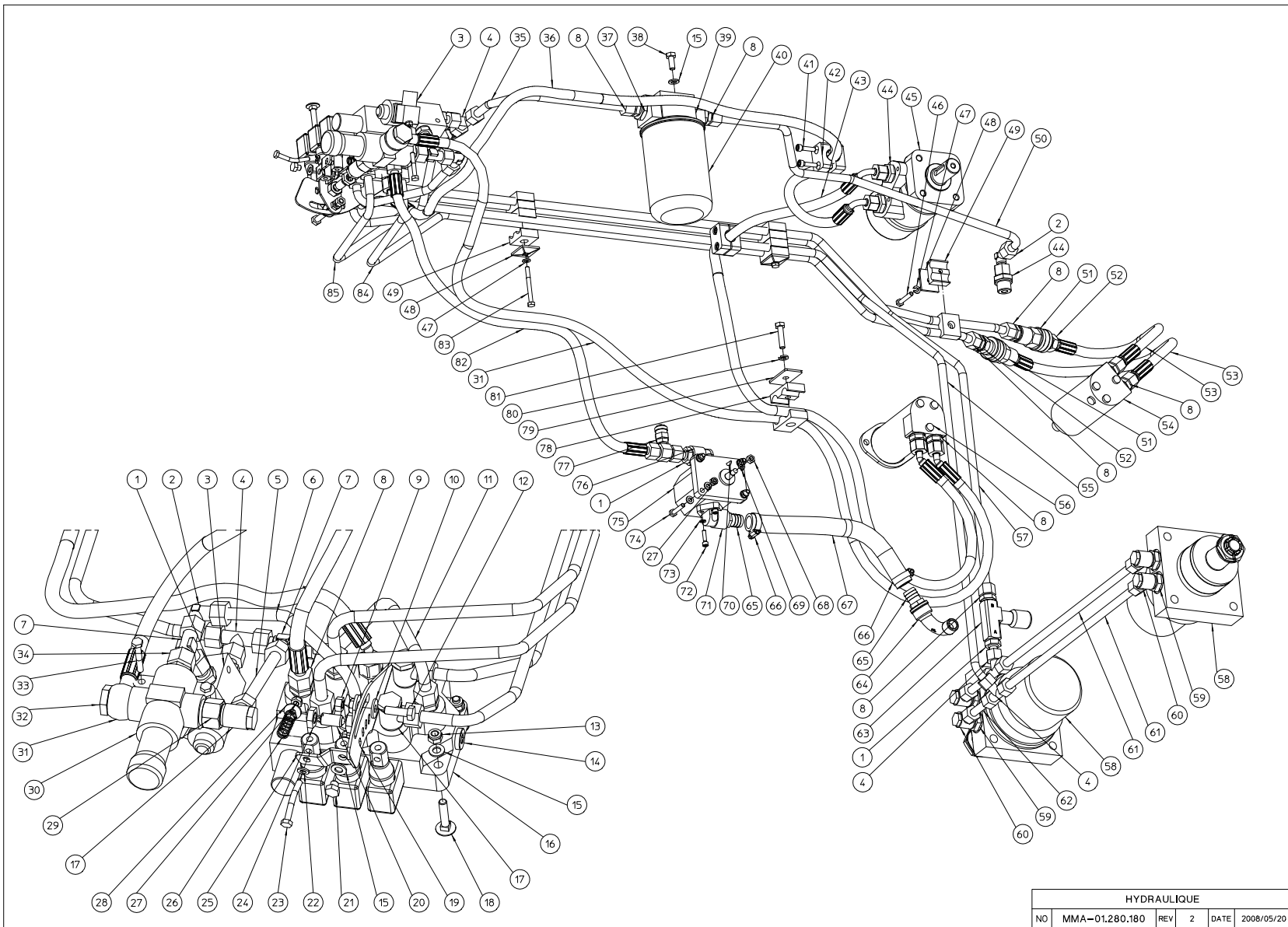


NOMENC: MMA-01.280.180

Pos	Qté	Nom	Description	Matériau
1	4	BH-512.611.206	TD126GG-12LR	
2	2	BH-511.911.200	TD119-12L	
3	1	BH-410.001.010	ELECTROVANNE 2/2 COMPLET 3/8	
4	3	BH-510.011.200	TD-100 12L	
5	1	MPA-01.281.610	TUYAU HYDRAULIQUE Ø 12MM	
6	1	MPA-01.281.600	TUYAU HYDRAULIQUE Ø 12MM	
7	2	BH-512.111.200	TD121-12L	
8	15	BH-509.211.206	TD92-12LR 3/8	
9	1	BS-501.000.800	DN 934 ECROU M8	
10	1	BS-532.008.204	RONDELLE DE CARROSSERIE M8X20X2	
11	1	MPA-01.281.590	TUYAU HYDRAULIQUE Ø 12MM	
12	1	BS-512.000.825	DIN 933 VIS M8X25	
13	3	BS-502.000.800	DIN 985 ECRU NYLON M8	
14	2	BH-518.500.600	STOP 3/8	
15	7	BS-531.000.800	DIN 125 RONDELLE M8	
16	1	BH-400.211.310	DISTRIBUTEUR HOM 11/3 K34 151/MOD.3/473Y3	
17	3	BH-513.111.206	TD-131-12LR	
18	3	BS-554.100.840	DIN 603 VIS A BOIS M8X40	
19	1	MPA-01.260.910	PLAT POSITION DISTRIBUTEUR	
20	1	BS-051.601.222	VIS DE PRESSION A RESSORT AVEC BILLE ET FENTE	
21	2	BS-512.000.808	DIN 933 VIS M8X8	
22	9	BS-531.000.600	DIN 125 RONDELLE M6	
23	1	MPA-01.281.130	VIS DISTRIBUTEUR DIN 931 M6 X 55 PLIER	
24	1	BS-501.901.200	DIN 439 1/2 ECRU M12	
25	1	MPA-01.260.450	POSITIONNEUR DISTRIBUTEUR	
26	1	BV-000.112.035	RESSORT DE PRESSION 1.0 X 12 X 35	
27	7	BS-502.000.600	DIN 985 ECRU NYLON M6	
28	1	BS-532.006.183	RONDELLE DE CARROSSERIE M6X18X15	
29	1	BH-505.722.060	REDUCTION M22X3/8 5BM2206	
30	1	BH-430.012.200	REGULATEUR DE DEBIT MTKAVAR-1M08	
31	1	BH-551.061.640	FLEXIBLE E706-EC062R8X12R018A45-1640	
32	1	BH-542.302.200	BOULON BANJO M22	
33	2	BS-511.000.640	DIN 931 VIS M6X40	
34	1	BH-509.221.222	TD92-12LM 22X15	
35	1	MPA-01.281.620	TUYAU HYDRAULIQUE Ø 12MM	
36	1	BH-551.061.400	E706-EC0612R018AX12R018A45-1400	
37	2	BH-514.013.206	TD141GG REDUCTION 3/4X3/8R	
38	2	BS-512.000.820	DIN 933 VIS M8X20	
39	1	BH-280.312.121	SUPPORT - FILTRE HUILE 3/4 25M RETOUR	
40	1	BH-280.212.000	FILTRE HUILE 3/4 25M RETOUR	
41	4	BS-521.100.625	DIN 912 VIS UMBRACO M6X25	
42	4	BH-711.710.100	FIXATION TUBE RAPR 217.2	
43	1	BH-551.061.550	FLEXIBLE E706-EC0612R018AX12R018A45-1550	
44	3	BH-509.211.208	TD92-12LR 1/2	
45	1	BH-330.412.502	MOTEUR OMP125 FLANCHE-CARRE 151-5214	
46	1	BS-512.000.635	DIN 933 VIS M6X35	
47	3	BS-533.000.600	DIN 127 RONDELLE GROER M6	
48	3	BH-710.003.010	PLAQUE DE COUVERTURE POUR FIXATION TUBE DP-B1	
49	10	BH-712.220.100	FIXATION TUBE RBRP 112	
50	1	MPA-01.281.630	TUYAU HYDRAULIQUE Ø 12MM	
51	2	BH-562.106.000	ACCOUPLMENT RAPIDE FEMELLE 61C66RP	
52	2	BH-561.106.000	ACCOUPLMENT RAPIDE MALE 61N66RP	
53	2	BH-551.060.400	FLEXIBLE E706-EC0606M0X12R018A45-400	
54	1	BH-330.205.000	MOTEUR OMM 50CC 1510013	
55	1	MPA-01.281.560	TUYAU HYDRAULIQUE Ø 12MM	
56	1	BH-331.205.000	MOTEUR HYDRAULIQUE 50CC AVEC BRIDE	
57	1	MPA-01.281.550	TUYAU HYDRAULIQUE Ø 12MM	
58	2	BH-330.516.002	OMRW 160 MOTEUR ROUE DANFOSS (AXE CONIQUE)	
59	4	BH-514.100.804	TD141GG REDUCTION MALE FEMELLE 1/2 X 1/4	
60	4	BH-513.111.204	TD-131-12LR X 1/4	
61	2	MPA-01.281.650	TUYAU HYDRAULIQUE Ø 12MM	
62	2	MPA-01.281.640	TUYAU HYDRAULIQUE Ø 12MM	
63	1	BH-430.110.600	ETRAVAILLEUR BYPASS F1 3/8 1251-5	
64	1	BT-174.190.808	COURBE 90° MALE/FEMELLE 1/2X1/2	
65	2	BT-136.260.820	RACCORD POUR FLEXIBLE DIA. INT 20 X 1/2	
66	2	BT-670.117.290	COLLIER 17X29 MM	
67	1	BR-200.219.030	TUYAU-ASPIRATION-HUILE	
68	1	BS-501.000.700	DIN 934 ECRU M7	
69	1	BS-533.367.110	RONDELLE FREIN DECROU A ERGOT INT ET EXT D7	
70	1	BB-321.020.512	DIN 6888 CLAVETTE DISQUE 2X5X12.65	
71	1	BH-281.001.200	BRIDE DE RACCORDEMENT 30MM 1/2	
72	6	BS-521.100.520	DIN 912 VIS M5 X 20	
73	6	BS-533.000.500	DIN 127 RONDELLE GROER M5	
74	4	BS-512.000.630	DIN 933 VIS M6X30	
75	1	BH-210.204.901	POMPHE 4.9CC GR15 GAUCHE	
76	1	BH-281.001.100	BRIDE DE RACCORDEMENT 30MM 3/8	
77	1	BH-563.000.120	TE ACCMANOMETRE 12L MA-620.04.012.51	
78	2	BH-711.720.100	FIXATION TUBE RBRP-217.2	
79	1	BH-710.003.020	PLAQUE DE COUVERTURE POUR FIXATION TUBE DP-B2	
80	1	BS-533.000.800	DIN 127 RONDELLE GROER M8	
81	1	BS-512.000.835	DIN 933 VIS M8X35	
82	1	BH-551.060.870	FLEXIBLE E706-EC0612R018AX12R018A-870	
83	2	BS-511.000.644	DIN 931 VIS M6X60	
84	1	MPA-01.281.570	TUYAU HYDRAULIQUE Ø 12MM	
85	1	MPA-01.281.580	TUYAU HYDRAULIQUE Ø 12MM	



HYDRAULIQUE					
NO	MMA-01.280.180	REV	2	DATE	2008/05/20