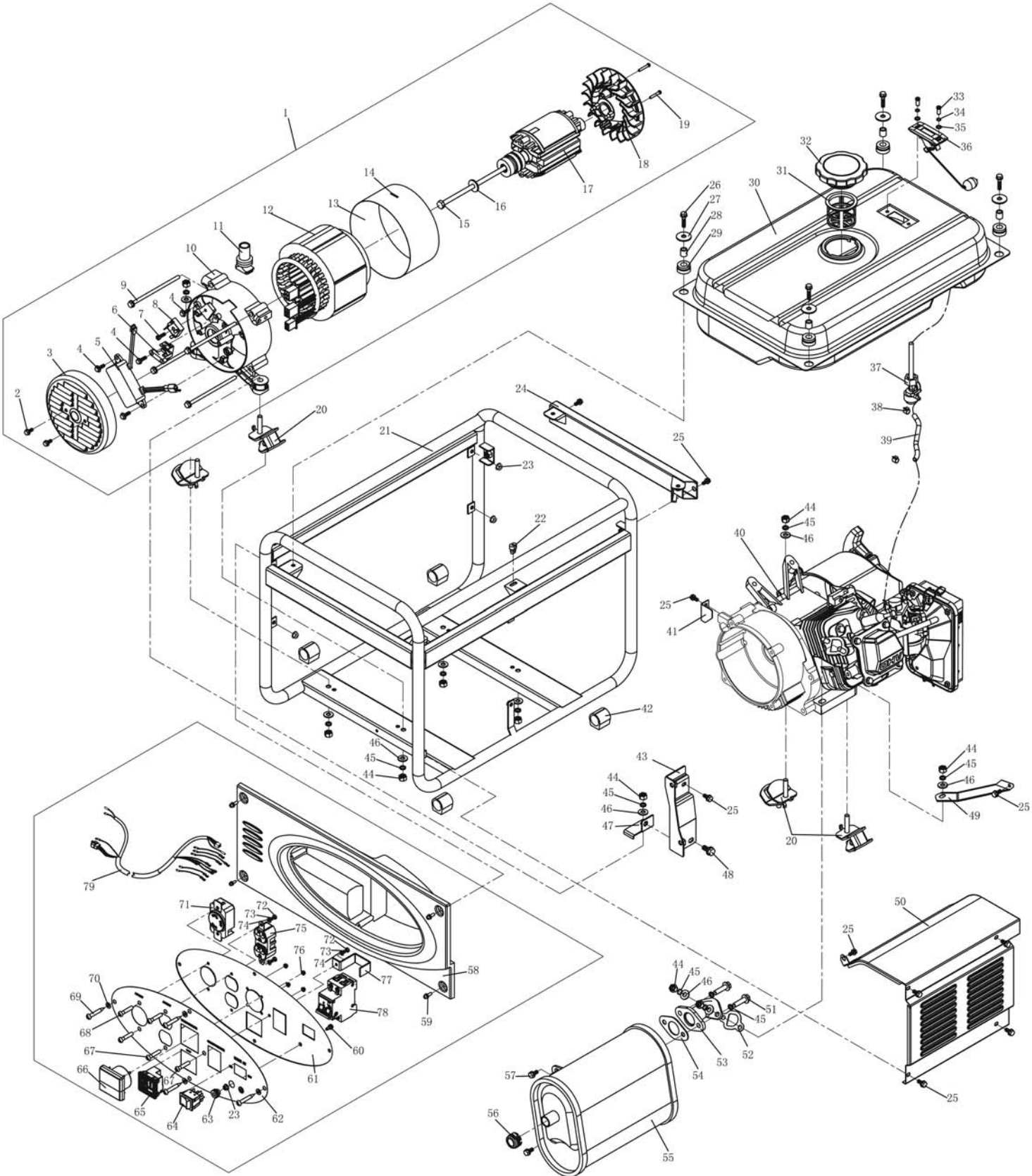


KGE2400X Rev. 12/2007



KGE2400X Rev. 12/2007

No.	Manf. #	Order #	Description	Qty.
1	KT2-2	66178	Alternator Assembly	1
2	GB/T16674.1-2004		Screw M5X12	2
3	8KM.012.009		Rear Cover	1
4	GB/T16674.1-2004		Bolt M5X20	4
5	AVR	66148	Automatic Voltage Regulator	1
6	D104	66508	Carbon Brush	1
7	GB/T5783-2000		Screw M5X16	1
8	KBPC25-10	66518	Rectifier	1
9	8KM.2003.009		Stator Tighten Bolt	4
10	8KM.032.009		Rear End Cover	1
11	KDE5000E-09002		Circuit Fixed Cover	1
12	3KM.681.009		Stator Assembly	1
13	8KM.011.009		Motor Protection Plate	1
14			Serial Number	1
15	8KM.2002.009		Piercing Bolt	1
16	8KM.214.009		Piercing Bolt Gasket	1
17	5KM.617.009		Rotor Assembly	1
18	8KM.451.009		Fan	1
19	GB/T823-2000		Screw M4X25	2
20	KGE2500X-12000		Shock Pad Assembly	4
21	KGE2500X-03100		Engine Frame Weldment	1
22	KGE2500X-11005		Fuel Tank Shock Absorber	1
23	GB/T6177.1-2000		Nut M6	5
24	KGE2500X-03200		Engine Frame Bracket	1
25	GB/T5789-2000		Bolt M8X12	10
26	GB/T5789-2000		Bolt M6X25	4
27	GB/T96.1-2002		Big Washer 8	4
28	KGE5500E-11001		Height Bushing	4
29	KGE5500E-11002		Shock Pad	4
30	KGE2500X-11100	66601	Fuel Tank	1
31	KGE5500E-11005		Oil Filling Strainer	1
32	KGE2800XI-11300	66939	Fuel Cap	1
33	GB/T818-2000		Screw M5X12	2
34	GB/T93-1987		Spring Washer 5	2
35	GB/T97.1-2002		Washer 5	2
36	KGE2500X-11300	66240	Fuel Gauge	1
37	KGE2500X-11500	66364	Fuel Valve	1
37a	KM168F-10004	66277	Fuel Filter	1
38	KM186F-10013	66541	Fuel Hose Clamp	2
39	KGE2500X-11004	66238	Fuel Hose	1
40	KM200G(1)X	66190	Gasoline Engine	1
	Engine Parts (Not Illustrated)			
	P19A-A-000	66194	Carburetor	1
	KG160-02018	66183	Carburetor Mounting Gasket	1
	KG160-02013	66889	Insulation Gasket B	1
	KG200G 72#	66189	High Altitude Jet	1
	KG160GX-07003	66187	Air Filter Element	1
	BP6ES	66162	Spark Plug	1
41	KGE2500X-02001		Motor Technical Baffle Plate	1
42	KGE2500X-03001		Shock Absorption Cover of Engine Frame	4
43	KGE2500X-10500		Muffler Fixed Bracket Weldment	1
44	GB/T6170-2000		Nut M8	10
45	GB/T93-1987		Spring Washer 8	12
46	GB/T97.1-2002		Washer 8	10
47	KGE2500X-10600		Muffler Fixed Bracket Weldment	1
48	GB/T5789-2000		Bolt M8X12	1
49	KG200GX-07006		Connection Fixed Plate of Air Filter	1
50	KGE2500X-10400	66872	Muffler Protection Plate	1
51	GB/T5786-2000		Bolt M8X1X30	2

No.	Manf. #	Order #	Description	Qty.
52	KG160-02014	66182	Exhaust Pipe Gasket	1
53	KGE2500X-10200		Exhaust Pipe Curved Part Weldment	1
54	KGE5500E-10001		Curved Pipe Seal Gasket	1
55	KGE2500X-10100	66239	Muffler	1
56	KGE2500X-10300	66269	Spark Arrestor	1
57	GB/T5789-2000		Bolt M8X20	2
58	KGE2500X-09001		Instrument Rear Cover	1
59	GB/T9074.4-1988		Screw Subassembly M6X20	4
60	GB/T5789-2000		Bolt M6X20	1
61	KGE2500X-13110FA		A-Style Control Panel	1
62	KGE2500X-13121FA		A-Style PVC Label	1
63	KDE5000E-09005		Grounding Nut	1
64	RF-1004		Boat-shaped Switch	1
65	WZ-Z2	66284	DC Receptacle	1
66	MU-45 0-150V	66552	Voltmeter	1
67	GB/T818-2000		Screw M4X16	3
68	GB/T818-2000		Screw M4X10	2
69	GB/T845-1985		Self-tapping Screw M5X16	4
70	GB/T97.1-2002		Washer(black) 5	4
71	L5-30	66279	A-Style Receptacle	1
72	GB/T6170-2000		Nut M4	3
73	GB/T97.1-2002		Washer 4	3
74	GB/T93-1987		Spring Washer 4	3
75	RU-22	66501	A-Style Receptacle	1
76	GB/T6172-2000		Nut M3	4
77	KDE14T-13103G		Breaker Bracket	1
78	NB1-63-B20-2P	66554	Breaker	1
79	KGE2400X-13200	66875	Wire Harness Assembly	1