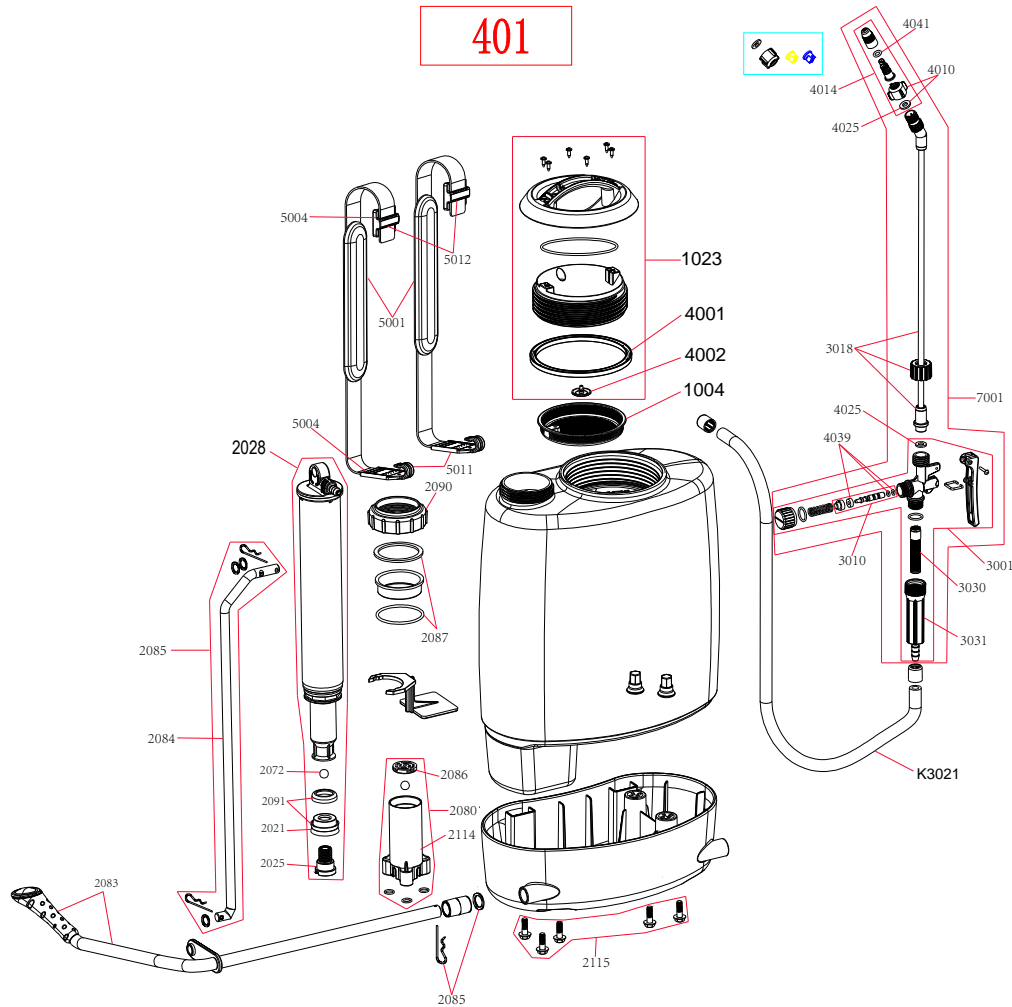


GMI140115-401

401



PART LIST

- 1004 STRAINER (NEW)
- 1023 BLACK LID & SEAL W/ HANDLE & COMFORT GRIP (NEW)
- 2021 VITON PISTON CUP
- 2025 PISTON HOLDER SCREW
- 2028 PISTON PUMP ASSEMBLY (COMPLETE)
- 2072 STAINLESS STEEL BALL
- 2080 COMPLETE CYLINDER, BALL, & GRATE
- 2083 METAL PUMP HANDLE WITH PLASTIC GRIP
- 2084 METAL PUMP LEVER IN SS WITH LOCKING PIN IN SS
- 2085 METAL PUMP LEVER WITH LOCKING PIN
- 2086 PLASTIC GRATE FOR CYLINDER
- 2087 NYLON GUIDE, FABRIC SEAL, & O-RING
- 2090 THREADED HOLDER FOR PUMP (BLACK)
- 2091 TWO-LIPPED PISTON & PISTON SEAT - VITON
- 2114 CYLINDER
- 2115 SCREW SET FOR BASE
- 3001 SPRAY GUN WITH BUILT-IN FILTER & GRIP
- 3010 BRASS SPINDLE SET
- 3018 BRASS SPRAY WAND - 20" (LG, CS, ACT)
- 3021 HOSE SET W/ CLAMPS
- 3030 REPLACEMENT FILTER FOR FILTERED SPRAY GUN
- 3031 REPLACEMENT GRIP FOR FILTERED SPRAY GUN
- 4001 SEAL FOR LID - 6"
- 4002 CHECK VALVE
- 4010 NOZZLE HOLDER
- 4014 ADJUSTABLE BRASS NOZZLE (HOLDER INCLUDED)
- 4025 WASHERS FOR SPRAY GUN TO WAND & NOZZLE ATTACHMENT (2)
- 4039 O-RING, & WASHER SET FOR SPINDLE
- 4041 O-RING FOR ADJUSTABLE NOZZLE
- 5001 DEL. ADJ. PADDED SHOULDER STRAPS -
- 5004 BUCKLE & HOOK FOR SHOULDER STRAP
- 5011 BUCKLES FOR SHOULDER STRAPS (2 EACH)
- 5012 HOOKS FOR SHOULDER STRAPS (2 EACH)
- 7001 UNIVERSAL GUN, WAND, & NOZZLE